

FTRI SQUAREGLOW

SquareGlow Phone / VP Signaler

OUR SQUAREGLOW PHONE SIGNALER ONLY WORKS WITH LANDLINE TTY or SORENSON VPs. IT WILL NOT WORK WITH A CELL PHONE OR DOORBELL RING.

Complete our online application to get your free SquareGlow signaler
 Or call FTRI at **800-222-3448**
Get This SquareGlow Signaler for Free

The SquareGlow™ Phone/VP transmitter lets you know when you have an incoming landline phone call or VP call. When paired with the SquareGlow™ Receiver (Flasher), you will be alerted by 7 adjustable color LED flashing lights that you have an incoming call.

- Features:
- Wireless range of up to 200m (650 feet)
 - Changing color button (On the side)

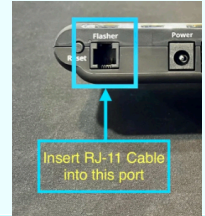
[Introduction to the SquareGlow phone signaler \(Video\).](#)



The Public Services Commission decides what equipment FTRI is allowed to distribute, based on TASA law.

TASA law does not include doorbells, motion sensors, and other accessories that are not related to phone calls.

The VP/Landline Squareglow was approved because it connects to either a Sorenson VP or landline phone, using an old-fashioned RJ11 connection jack.



CONNECTS TO:



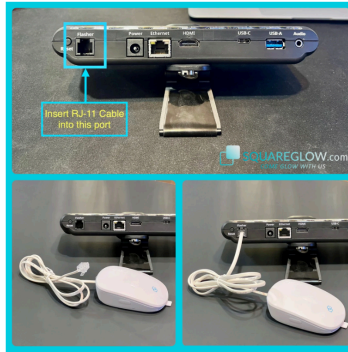
SORENSON VP: YES

✓ Works with Landlines & Sorenson VRS

- This signaler is **not compatible** with Zoom, Facebook Messenger, Purple VRS, Convo, or ZVRS.
- Works with landline-based phone systems and Sorenson VRS when connected to Sorenson hardware using their Phone Tree Workaround.



SHOP NOW HOW IT WORKS SUPPORT PARTNERS
 SquareGlow Phone/VP Call Signaler Kit - Visual Call Alerts



LANDLINE PHONE: YES



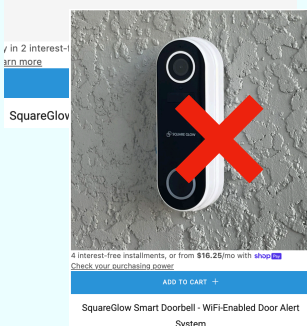
WHAT ABOUT SQUAREGLOW ACCESSORIES?

FTRI is not able to support any Squareglow accessories. Some other states do.

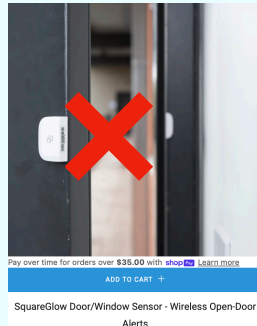
Each state makes their own program rules, and not all states offer the same equipment and services.

Learn more at: TEDPA.com

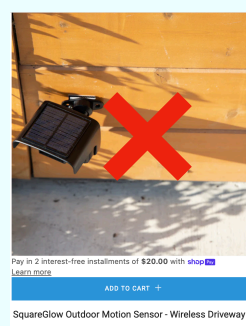
DOORBELL: NO



MOTION SENSOR: NO



DRIVEWAY & YARD ALERT: NO



CELL PHONE: NO

